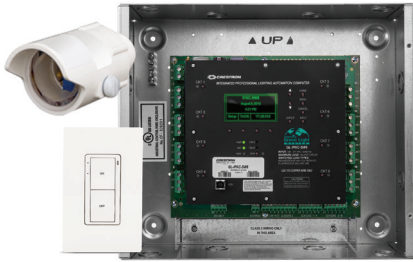


GLIPACSW8 System



The GLIPACSW8 SpaceBuilder system is perfect for spaces such as retail stores, small office spaces, parking garages, and service stations, which typically require only ON/OFF switching. It eliminates the need for an expensive large switching panel. Compact yet versatile, the GL-IPAC-SW8 system easily integrates with Crestron automation solutions, enabling you to centrally monitor and remotely control lights in multiple locations.

SpaceBuilder allows you to specify all the necessary features and operations for an autonomous lighting control system specifically designed for the needs of your space. Start by selecting the load types and accessories and finish by defining how each interface should function to control lighting levels, vacancy sensing, daylight harvesting, shades, and AV.

System Components

GL-IPAC-SW8

Switching panel provides internal control for 8 switched loads and is expandable to support up to 64 switched loads by adding external feed-through panels. It features local inputs for sensors and keypads, along with a LCD user interface for local setup without having to connect to a computer.

Keypads

Up to 4 keypads can be added to a GLIPACSW8 space. Refer to page 4 for standard sequence of operations and button configurations that can be specified. An optional key switch can be added to this system to lock out functionality of keypads.

Occupancy Sensors

Up to 4 dual technology occupancy sensors can be added to each GLIPACSW8 space for either occupancy or vacancy sensing. Each sensor offers coverage for spaces up to 4,000 square feet. Sensor coverage varies based on type, see detail at end of this worksheet. Sensor defaults to vacancy operation unless noted as occupancy operation in the space part number.

Daylight Sensors

Up to 4 interior daylight sensors and 1 exterior daylight sensor can be added to each GLIPACSW8 space for daylight harvesting control.

Options

Networking

Any Crestron SpaceBuilder system can be networked to provide centralized monitoring, management and master control. This includes direct integration with BMS and reporting, alerts, global time clock management, maintenance, and automation via Crestron Fusion®.

GLIPACSW8+ _____ - _____ KP - _____ KP - _____ KP - _____ KP - _____

_____ - _____ - _____ - _____ - _____ - _____

Date: _____ Project: _____
 Quantity: _____ Space Name: _____
 Space Number(s): _____

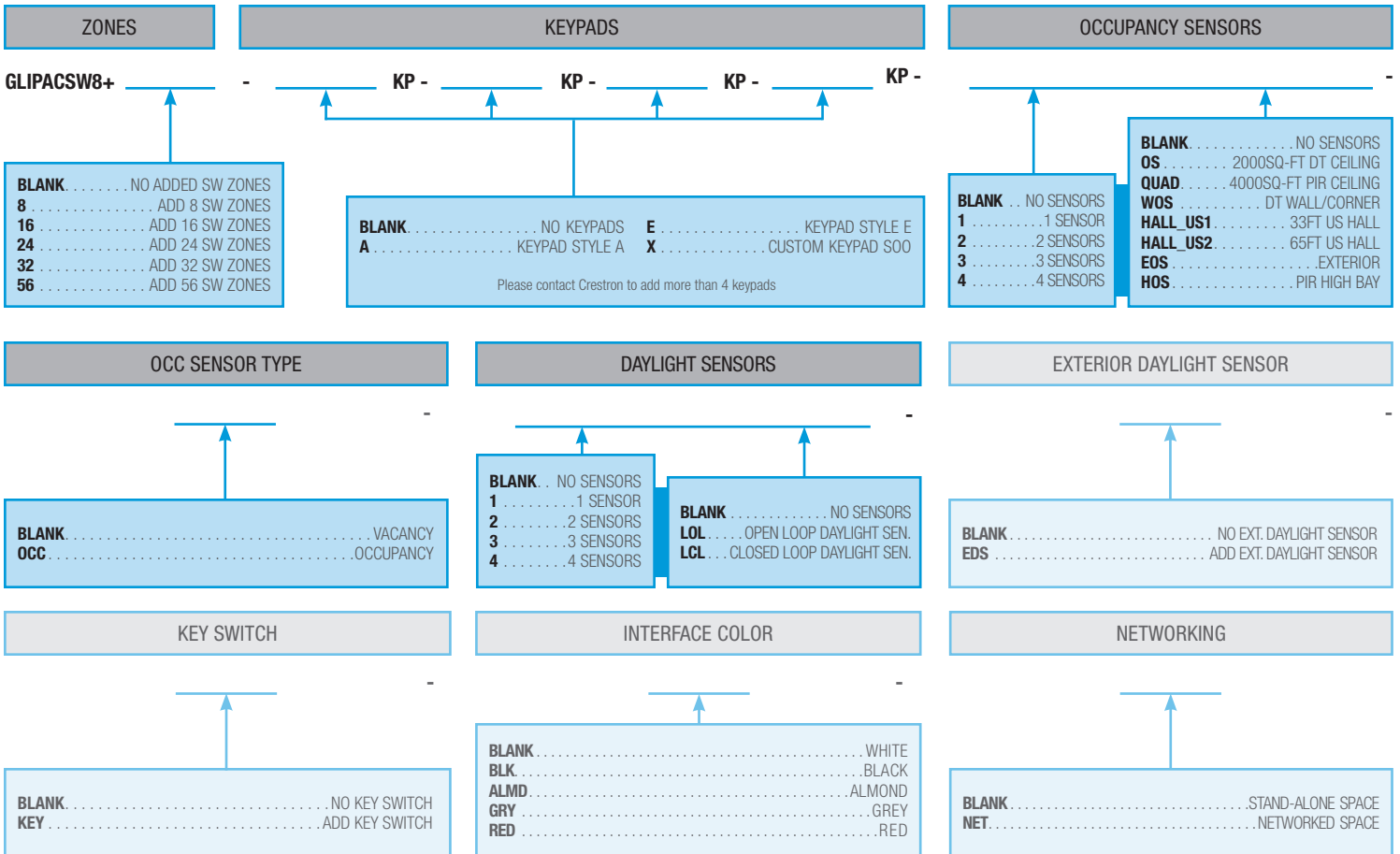
GLIPACSW8 SpaceBuilder Load Schedule

Zone #	Zone Description	Fixture Tag	Circuit #	Voltage	Load Type	Emergency / Life Safety	Dim	Fixture Watts	Quantity	Total Watts
Example	Downlights	A	H2-1	120 VAC	Switched	None	No	25W	4	100W
1					Switched		No			
2					Switched		No			
3					Switched		No			
4					Switched		No			
5					Switched		No			
6					Switched		No			
7					Switched		No			
8					Switched		No			

Note: if over 8 zones, provide additional load schedule information.

120 VAC
277 VAC

None
Partial Zone
Complete Zone

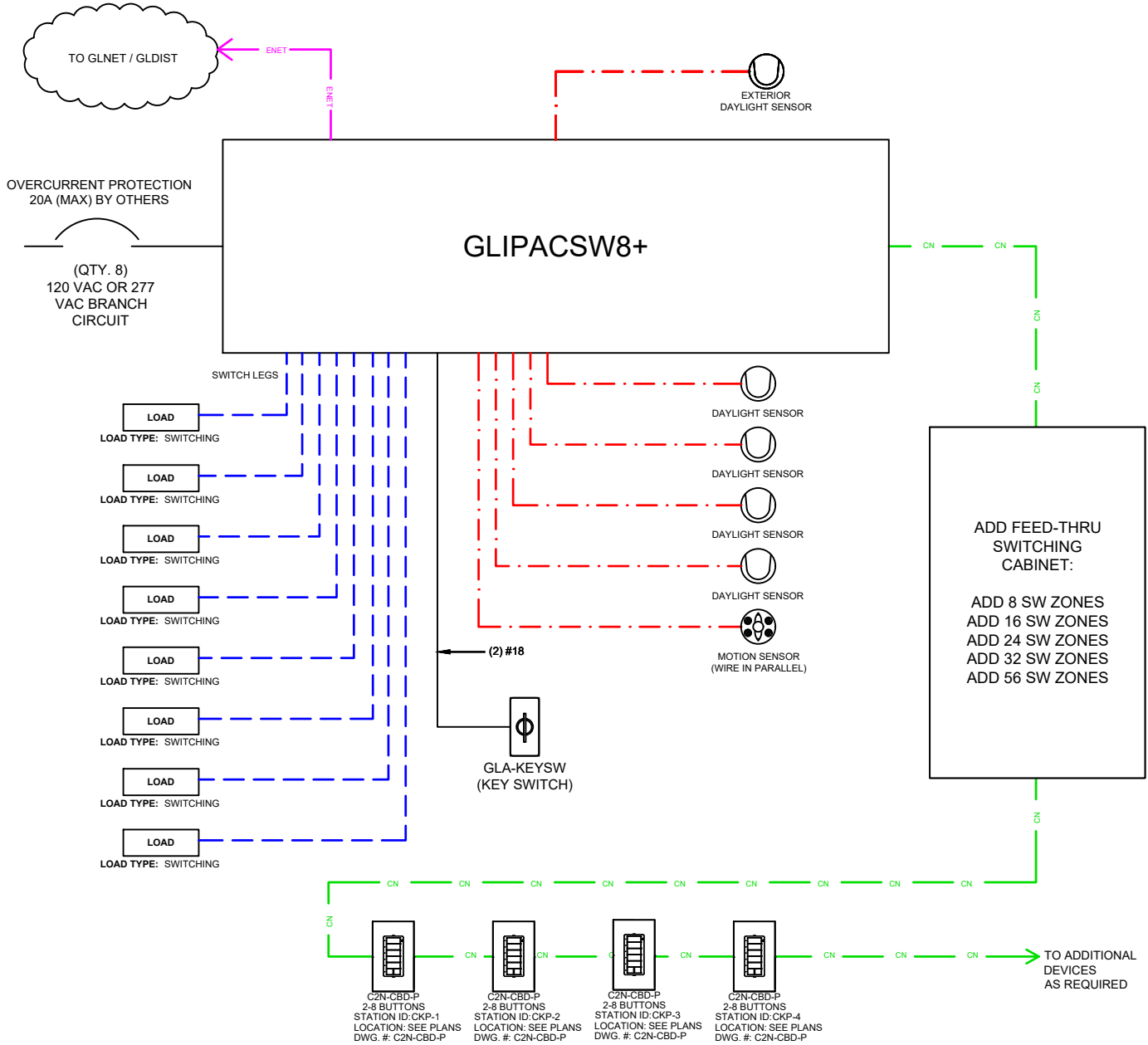


Example: GLIPACSW8+16 - AKP - AKP - 4EOS - EDS - KEY - NET

GLIPACSW8+ _____ - _____ KP - _____ KP - _____ KP - _____ KP - _____

Date: _____ Project: _____
 Quantity: _____ Space Name: _____
 Space Number(s): _____

GLIPACSW8 SpaceBuilder Schematic Riser



CABLE TYPES:
(NOT ALL TYPES ARE USED ON ALL PROJECTS)

- - - - - 120 VAC OR 277 VAC
- — — — — CRESNET
- - - - - 0-10V
- - - - - DALI
- — — — — ETHERNET
- - - - - SENSOR (CRESNET OR 3-#18)

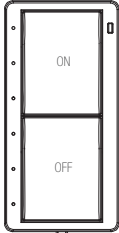
ALL LOW-VOLTAGE CABLE RUNS ARE CRESNET UNLESS OTHERWISE NOTED.

GLIPACSW8+ _____ - _____ KP - _____ KP - _____ KP - _____ KP - _____

Date: _____ Project: _____
 Quantity: _____ Space Name: _____
 Space Number(s): _____

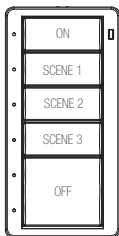
GLIPACSW8 SpaceBuilder Sequence of Operations

KEYPAD TYPE A **Typical Applications**
Office, Restroom, Storage/Utility Room, Corridor, Basic Classroom



- Button 1 Functionality: ON**
- > Turn all lights on
 - > If daylight sensor is not present, lights will turn on to 100%
- Button 2 Functionality: OFF**
- > Turn all lights off

KEYPAD TYPE E **Typical Applications**
Office, Conference Room, Cafeteria, Library, Multipurpose Room, Lobby, Ballroom



- Button 1 Functionality: ON**
- > Turn all lights on
 - > If daylight sensor is not present, lights will turn on to 100%
- Button 2 Functionality: SCENE 1**
- > Recalls scene 1 settings with feedback
- Button 3 Functionality: SCENE 2**
- > Recalls scene 2 settings with feedback
- Button 4 Functionality: SCENE 3**
- > Recalls scene 3 settings with feedback
- Button 5 Functionality: OFF**
- > Turn all lights off

KEYPAD TYPE X **Typical Applications**
All applications needing a custom keypad button configuration and functionality

Custom Keypad S00

Note

By selecting keypad types, the SpaceBuilder system will be programmed, packaged, and shipped from the factory as an operable turnkey lighting control solution. Additional on-site support may be required for scene or sensor calibration.

GLIPACSW8+ _____ - _____ KP - _____ KP - _____ KP - _____ KP - _____

_____ - _____ - _____ - _____ - _____ - _____ - _____

Date: _____ Project: _____
Quantity: _____ Space Name: _____
Space Number(s): _____

GLIPACSW8 Specifications

LOAD RATINGS

Switched Channels:

8 internal; expandable up to 64 zones per maximum designated by SpaceBuilder design external panels and modules

Per Unit:

16 Amps @ 100-277VAC, 50/60Hz

Switch Load Types:

Fluorescent Ballast, Incandescent, Magnetic Low-Voltage, Electronic Low-Voltage, Neon/Cold Cathode, High-Intensity Discharge, LED, Motor

Relay Lifetime:

Resistive rating: 100,000 on/off operations, 50A @ 277 VAC;
General rating: 50,000 on/off operations, 16A @ 120/277 VAC

ENCLOSURE

Surface mount metal box enclosure, suitable for mounting in plenum airspace.

ENVIRONMENTAL

Temperature:

32° to 104°F (0° to 40°C)

Humidity:

10% to 90% RH (non-condensing)

DIMENSIONS

Height:

12.13 in (308 mm)

Width:

14.13 in (359 mm)

Depth:

4.06 in (104 mm)

STANDARDS & CERTIFICATIONS

UL Listed Enclosure
CEC Title 24 2013 Compliant



- 8 internal switched loads
- Expandable to control up to 64 zones per maximum designated by SpaceBuilder design
- Supports 100 to 277 Volt applications
- 16 Amp load rating per channel
- Built-in astronomical time clock
- Positive air gap at each output
- Phase-independent channels
- Local controls for setup, testing, and verification
- Local and remote override capability
- Non-volatile power failure memory
- Easy access is facilitated from the hinged front cover

Products in this system can include:

- GLS-ODT-NS: Occupancy Sensor
- GLS-LOL: Interior Daylight Sensor
- GLS-LEXT: Exterior Daylight Sensor
- GLA-IR-QUATTRO-HD-COM1-24: 4000 sq-ft interior ceiling motion sensor
- GLA-DT-CM-COM1-24: Dual technology corner mount motion sensor
- GLA-US-ONEWAY-COM1-24: Ultrasonic 35ft corridor motion sensor
- GLA-US-HALLWAY-COM1-24: Ultrasonic 65ft corridor motion sensor
- GLA-IS-360: High bay motion sensor
- GLA-HBS-300: Exterior motion sensor
- C2N-IO: Serial RS-232 interface
- C2N-CBD-P: Keypad
- GLA-KEYSW-MAINTAIN: Keyed switch

For technical specifications on all other products in this system, please visit www.crestronlighting.com

For more information or to access digital specification forms for all Crestron SpaceBuilder systems, visit www.crestronspacebuilder.com or call 855-644-7643

Notes:

GLIPACSW8+ _____ - _____ KP - _____ KP - _____ KP - _____ KP - _____

Date: _____ Project: _____
 Quantity: _____ Space Name: _____
 Space Number(s): _____